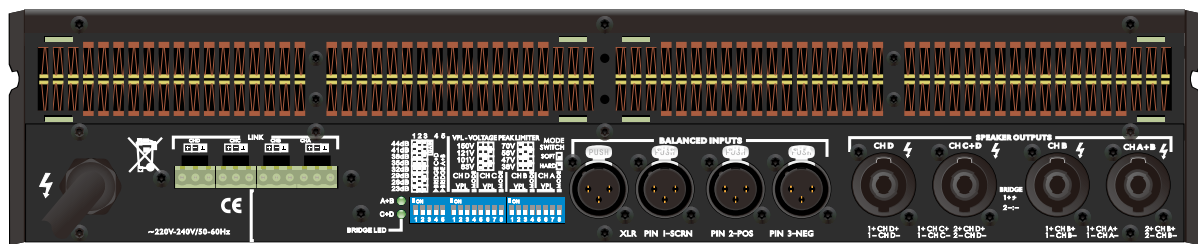


Features and Technical Data

- **Design for public address / outdoor concert and installation application.**
- **Very high power and channel density** The four-channel TD10000Q delivers a total of 10000 W (4 x 2500 W @ 2 ohms) in only 2U.
- **Four-channel flexibility** Four channels in one cabinet increases efficiency, flexibility and value in powering monitor systems, line arrays, and bi- or tri-amped systems. Adjacent channels bridgeable for 2- or 3-channel operation.
- **River Acoustics sound quality** TD10000Q amplifiers maintain the impeccable sonic performance standards set by the original TD Series, with the same durability and even greater efficiency.
- **Patented Class TD amplifier topology** Road-proven output stage delivers Class B audio quality with Class D efficiency.
- **Regulated Switch Mode Power Supply (R.SMPS™)** Output power remains constant even with significant drops in the mains voltage.
- **Efficient cooling system** Unique, lightweight Intercooler® copper cooling system dissipates more heat to allow extended peak output.
- **Adjustable parameters** Selectable Gain, scalable Voltage Peak Limiter (VPL™), and bridge-mode operation allow custom configuration for any system or application.
- **XLR input and link connectors**
- **Heavy-duty binding posts**
- **Comprehensive protection and warning** Excessive output current, DC, high temperature, very high frequency (VHF), short circuit, open load, mains fuse protection, and soft start.



Specifications

General

Number of channels	4
Peak total output both channels driven	10000 W
Peak output voltage per channel	150 V

Max. Output Power

	2 ohms	4 ohms	8 ohms
Per ch. (all ch.'s driven)	2500 W	2100 W	1300 W
Bridged per ch.	n.r.	5000 W	4200 W

Performance with Gain: 35 dB and VPL: 195 V

THD 20 Hz - 20 kHz for 1 W	<0.1%
THD at 1 kHz and 1 dB below clipping	<0.05%
Signal To Noise Ratio	>112 dBA
Channel separation (Crosstalk) at 1 kHz	>70 dB
Frequency response (1 W into 8 Ω) +0/-3 dB	6.8 Hz - 34.2 kHz
Input impedance	20 kΩ
Common Mode Rejection (CMR)	>54 dB
Output impedance @ 100 Hz	32 mΩ

Gain and Level

Amplifier gain selectable	23, 26, 32, 35, 38, 41, 44 dB
Default gain	38 dB 35 dB 35 dB 35 dB 35 dB 35 dB
Level adjustment (per ch.)	Front-panel potentiometer, 31 position detented from -inf to 0 dB

Connectors and Switches

Input connectors (per ch.)	3-pin XLR, electronically balanced
Output connectors (per ch.)	Neutrik Speakon or Binding Posts (must be specified upon order).BP only on LA14K
Output bridge mode	A+B - Ch. A is signal input source. A+B, C+D - Ch.'s A and C are input source
Intelligent fans (on/off)	Yes, depending on presence of output signal
Power on/off and Remote enable on/off	Individual switches on front-panel
Cooling	Two fans, front-to-rear airflow, temperature controlled speed

Front-panel indicators:

Common	NomadLink network; Power Average Limiter (PAL) 4; Power on
Per channel	Signal present / High-impedance; -20 dB, -15 dB, -10 dB and -4 dB output signal; Voltage Peak Limiter (VPL); Current Peak Limiter (CPL); Very High Frequency (VHF); High temperature; Fault; Mute

Dimensions

W: 483 mm (19"), H: 88 mm (2 U), Overall D: 396 mm (15.6"), Mounting D: 358 mm (14.1")

Weight

12 kg (26.4 lbs.)

Finish

Black painted steel chassis with black painted steel / aluminum front